

# SOUTHERN MAINE'S ICONIC VILLAGES: PAST, PRESENT, & FUTURE

---

*Adapting Historic Resources to Sea Level Rise  
through Regional Coordination*



**Abbie Sherwin**

Senior Planner & Coastal Resilience Coordinator

Southern Maine Planning & Development Commission

Keeping History Above Water

Portsmouth, NH

May 9, 2023



# THE MARGINAL WAY

---

Ogunquit, ME



# Site Context

- Coastal cliff walk on public land – rare for Maine!
  - Land donated to Ogunquit in 1925
- 400K+ annual visitors
- Added to National Register of Historic Places in 2022



## Marginal Way Footpath Map

Courtesy of the Marginal Way Preservation Fund  
Find out how you can be a part of preservation at [www.marginalwayfund.org](http://www.marginalwayfund.org)



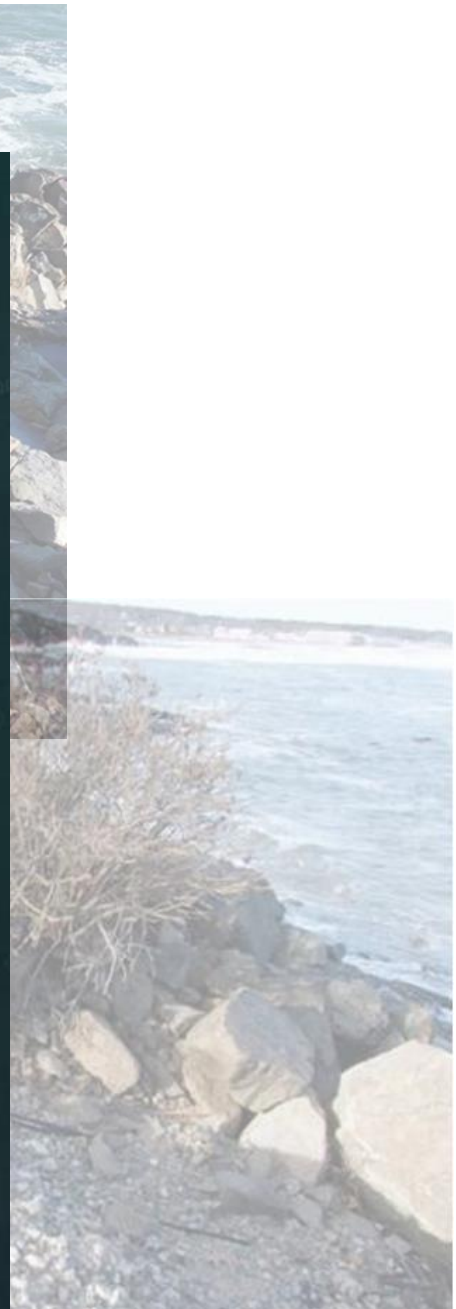
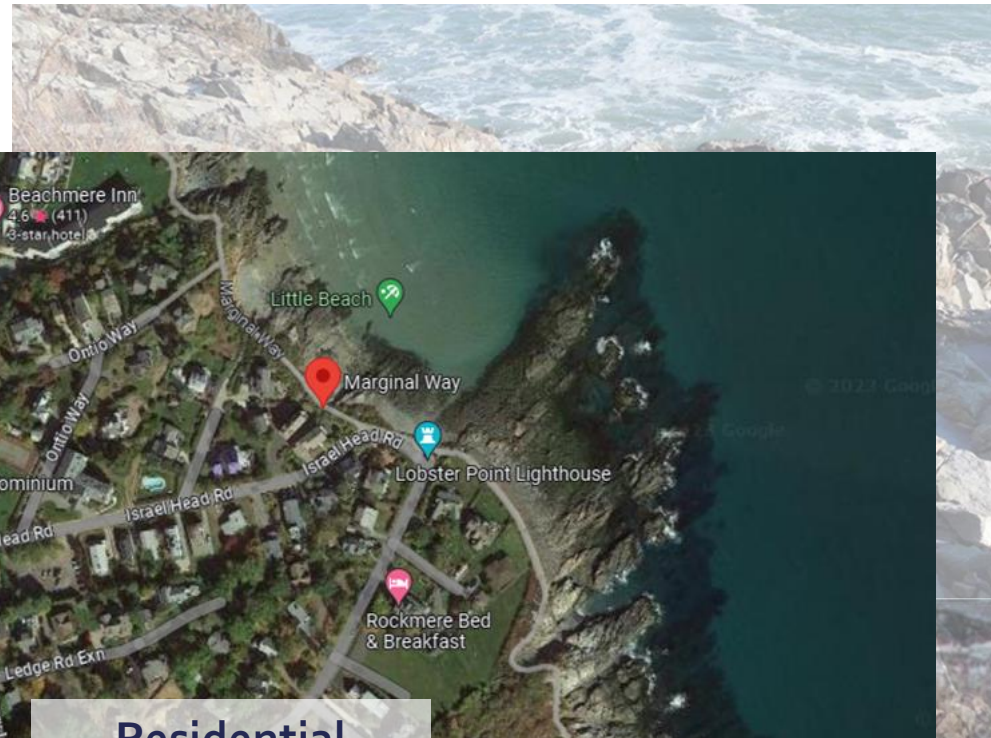


# The Challenge





# The Challenge







#### #20 THREE TREES

- ISSUE:
- EROSION AT THREE TREES EXPOSING ROOTS
- SOLUTION:
- INSTALL NEW RETAINING AROUND EDGE OF TREES
  - TIE INTO EXISTING RETAINING WALL
  - FILL IN EXPOSED ROOTS WITH SOIL



# The Response

- Regional coastal resilience planning and sea level rise assessment
- Dedicated volunteer committee & non-profit
  - Routine monitoring
  - Invasive species removal and replanting
- Town leadership support for long-term planning
  - Repair, maintenance, and resilience plan





**#20 THREE TREES**

- ISSUE:**
- EROSION AT THREE TREES EXPOSING ROOTS
- SOLUTION:**
- INSTALL NEW RETAINING AROUND EDGE OF TREES
  - TIE INTO EXISTING RETAINING WALL
  - FILL IN EXPOSED ROOTS WITH SOIL



# The Response

- Regional coastal resilience planning and sea level rise assessment
- Dedicated volunteer committee & non-profit
  - Routine monitoring
  - Invasive species removal and replanting
- Town leadership support for long-term planning
  - Repair, maintenance, and resilience plan









# DOCK SQUARE & LOWER VILLAGE

Kennebunk & Kennebunkport, ME



# Site Context

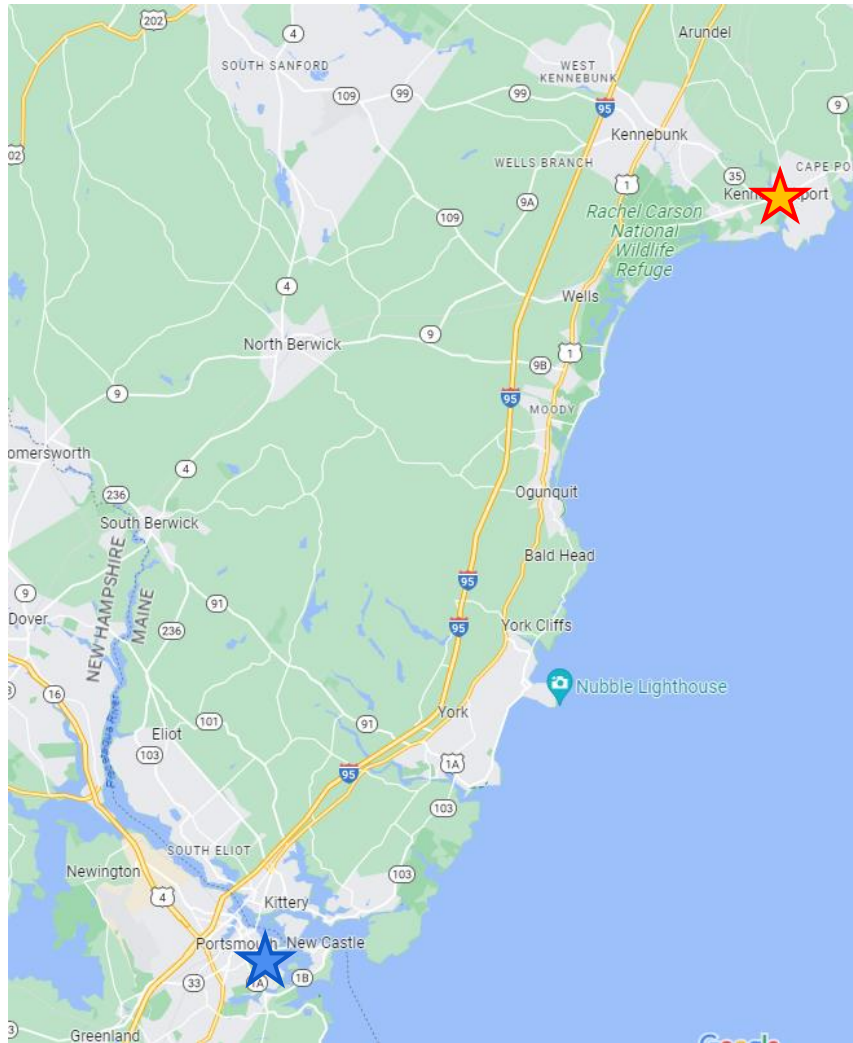


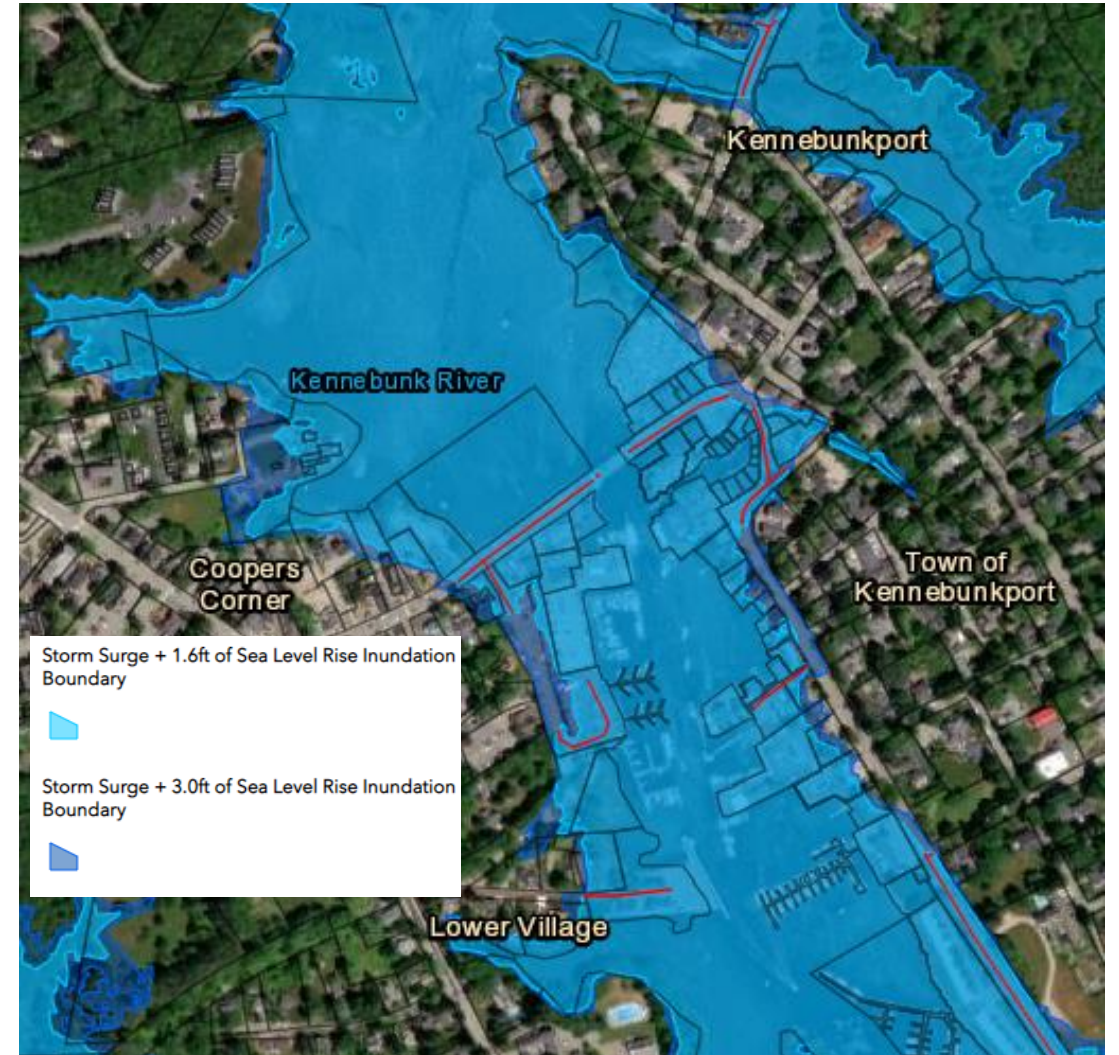
Photo credit: Tom Morgan







# The Challenge





# The Response

- Sea level rise vulnerability assessments & coastal resilience planning
- Flood mitigation assessment of structures
- Coordinated town climate action plans
- Youth-led community dialogues about flood hazards and sea level rise





# Recap

## Marginal Way

- Public land adjacent to development
- Historic walking path
  - Limited options for long-term adaptation
- Indirect economic benefits
- 1 municipality
- Ongoing resilience initiatives



## Dock Square & Lower Village

- Mostly private land
- Historic structures
  - More options for long-term adaptation?
- Direct economic benefits
- 2 municipalities
- So far, just resilience planning





# Key Takeaways

- Significance of regional planning to provide capacity and 'connect the dots'
- Importance of committed, passionate volunteers
- Short-term vs. long-term solutions for sea level rise adaptation
  - Protection, for as long as possible
  - Realignment as a temporary stop-gap
  - Eventually, it is VERY LIKELY that managed retreat/relocation will need to be considered





# THANK YOU

# QUESTIONS?

---

Abbie Sherwin

[asherwin@smpdc.org](mailto:asherwin@smpdc.org)

*Senior Planner & Coastal Resilience Coordinator*

Southern Maine Planning & Development Commission

